

## Modifying an Order

To modify an order you need to open the appropriate Order ticket. There are 2 ways to open an Order ticket:

- The simplest is to double-click on the Open Order in the active order window of the desired order,
- You can also open an Order ticket by right clicking on the Open Order in the active order window of the appropriate order, this will open the popup menu, and you select *Show/Edit*.

Linked ID	Pair	B/S	Amount	Price	Validity	Type
Not linked	EUR-USD	Sell	(500'000)	1.2705	GTC	Limit

Double click

Right click



*Order ticket: price is modifiable*

To modify the price of the order, you have to double-click on the price to type in it. If your mouse has a scroll wheel, you can use that to raise or lower the price. And you can also use the up and down arrow buttons.

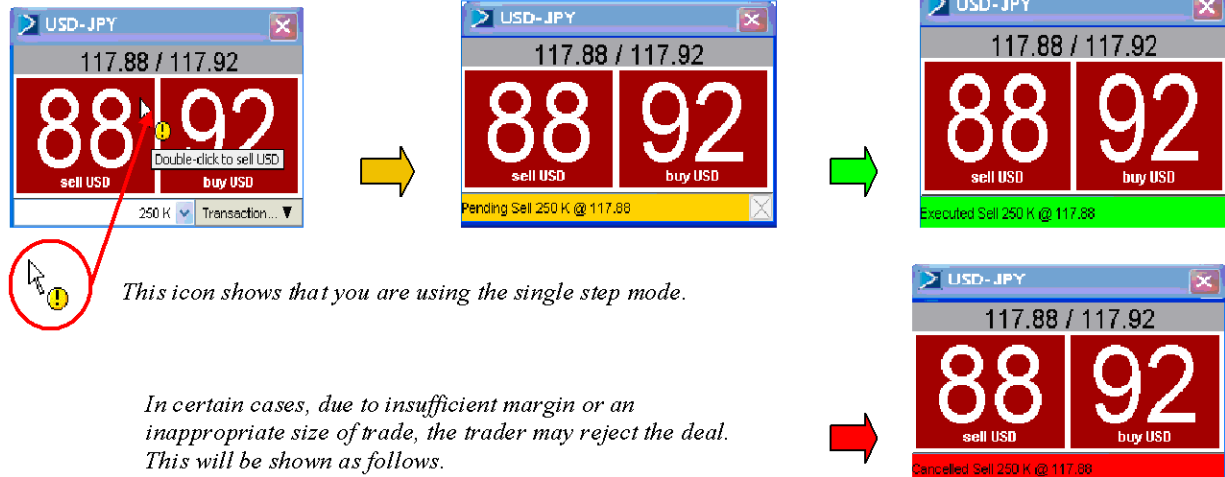
After modifying the price, you need to click on "Modify" to send the modification to Realtime Forex.



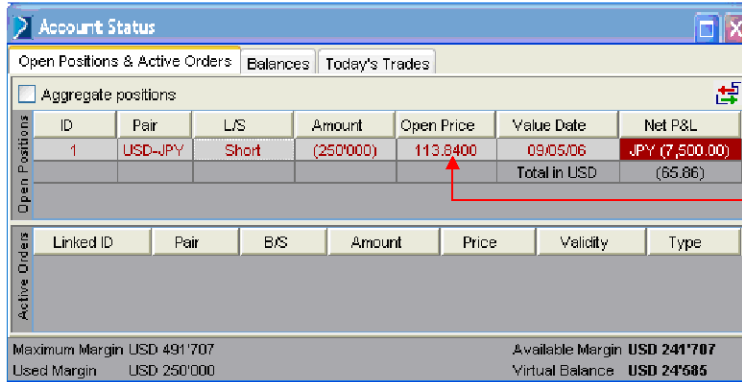
## Speed Trading

Some clients may prefer to take some shortcuts when trading. For these clients, we have created Single Step Mode. This option may be selected for all instruments in the Settings menu or on an instrument-by-instrument basis in the Price window right-mouse-click drop-down menu. Single Step Mode simply bypasses the Deal Ticket by a simple double-click and allows you to specify and see the results of a trade all within the instrument Price window.

As noted for normal trading, this transition from Pending to Executed is normally instantaneous. You only need to double click.



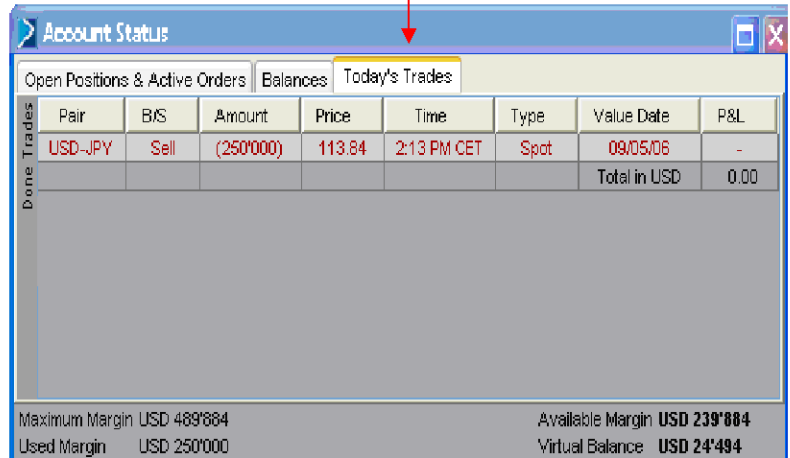
Once a trade has been executed, evidence of it is shown in the Today's Done Trades tabbed window. The trade will also create, modify, or remove an entry in the Open Positions tabbed window.



Account Status							
Open Positions & Active Orders		Balances	Today's Trades				
<input type="checkbox"/> Aggregate positions							
ID	Pair	L/S	Amount	Open Price	Value Date	Net P&L	
1	USD-JPY	Short	(250'000)	113.8400	09/05/06	JPY (7,500.00)	
Total in USD						(65.86)	
Linked ID	Pair	B/S	Amount	Price	Validity	Type	
Maximum Margin USD 491'707				Available Margin USD 241'707			
Used Margin USD 250'000				Virtual Balance USD 24'585			

The transaction will open, modify or remove an entry of the open positions view...

...and is still visible in the today's trades tabbed view.



Account Status								
Open Positions & Active Orders		Balances	Today's Trades					
Pair	B/S	Amount	Price	Time	Type	Value Date	P&L	
USD-JPY	Sell	(250'000)	113.84	2:13 PM CET	Spot	09/05/06	-	
Total in USD							0.00	
Maximum Margin USD 489'684				Available Margin USD 239'684				
Used Margin USD 250'000				Virtual Balance USD 24'494				